

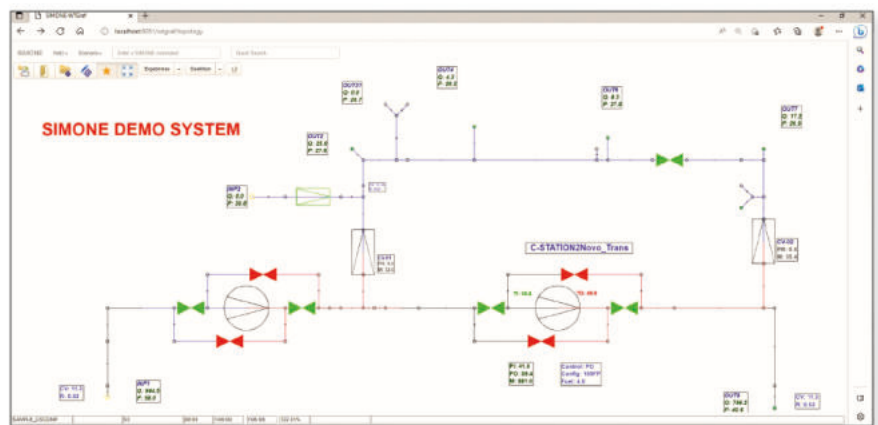


**The SIMONE Web Interface** has been developed to bring the Simone GUI to all kinds of devices and platforms. SIMONE Web Interface is a universal, versatile tool for interacting with SIMONE in the easiest possible way.

## SIMONE Web Interface

This unique Web Interface allows inspection of networks and scenarios with java-script supported browser, while in the background a web server does the heavy lifting.

Server-side computation makes it possible to use SIMONE on devices with minimum hardware specifications.



There are many benefits of a web application. It can be accessed through various platforms such as desktop, laptop or mobile device. It can be accessed through multiple browsers and view multiple networks simultaneously in different tabs.

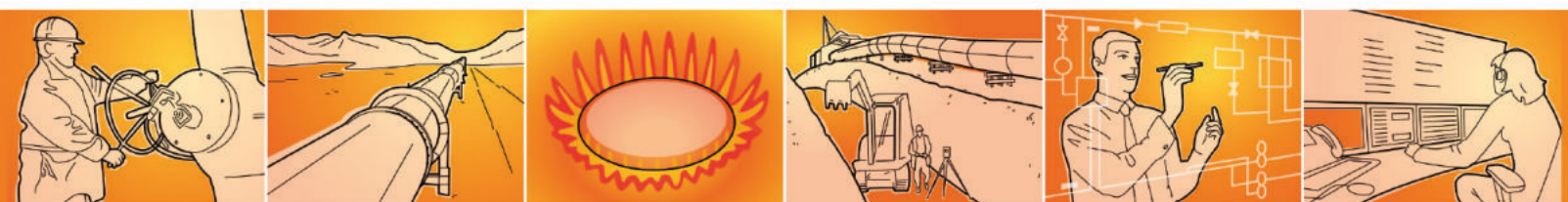
It is not necessary to install any software on the device nor is a license dongle required.

Security is an important issue for pipeline operators. Pipeline networks having sensitive infrastructure information and a web server's communication are popular targets for hackers.

Thus all sensitive files like network and scenario information are stored only on the server side. With the integration of https encryption secure communication over computer networks and internet is assured.

The web interface starts with the viewing functionality, but can be extended to support the broader range of SIMONE applications.

**SIMONE**  
SOFTWARE  
Simulation and Optimization on Networks





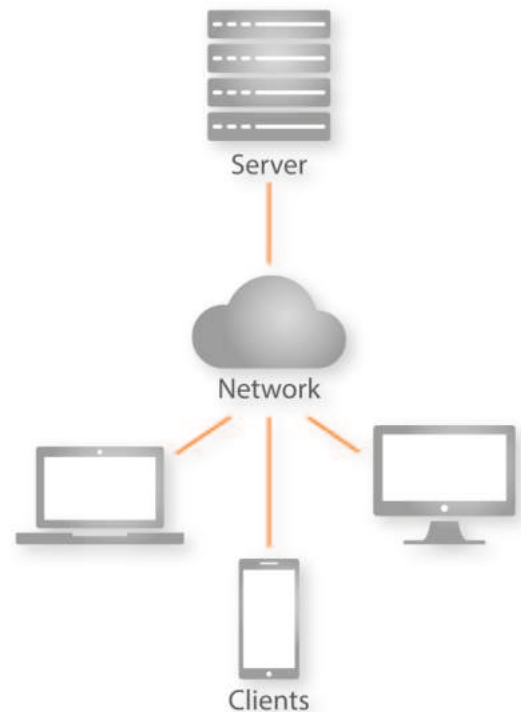
## Fact Sheet

### SIMONE Web Interface

- accessible from any device with a web-browser supporting Java scripting
- deployable on a web-server and runnable as windows service
- supports HTTPS/Certificates
- minimized network traffic

### SIMONE Functionalities

- tracks gas compositions, gas parameters, and PIGs
- calculates temperature, line pack, flow speed, and more
- single kernel source code for Windows, Unix and Linux systems
- Client-Server Technology and Multi-User Support
- versatile Application Programming Interface, known as the SIMONE API, for integration with SCADA, GIS, data-bases, and customer applications



## SIMONE Users



## Contact and Product Support



### LIWACOM Informationstechnik GmbH

Hachestrasse 14  
45127 Essen, Germany

Phone +49 201 170 38-0  
Email [postmaster@liwacom.de](mailto:postmaster@liwacom.de)

[www.liwacom.de](http://www.liwacom.de)